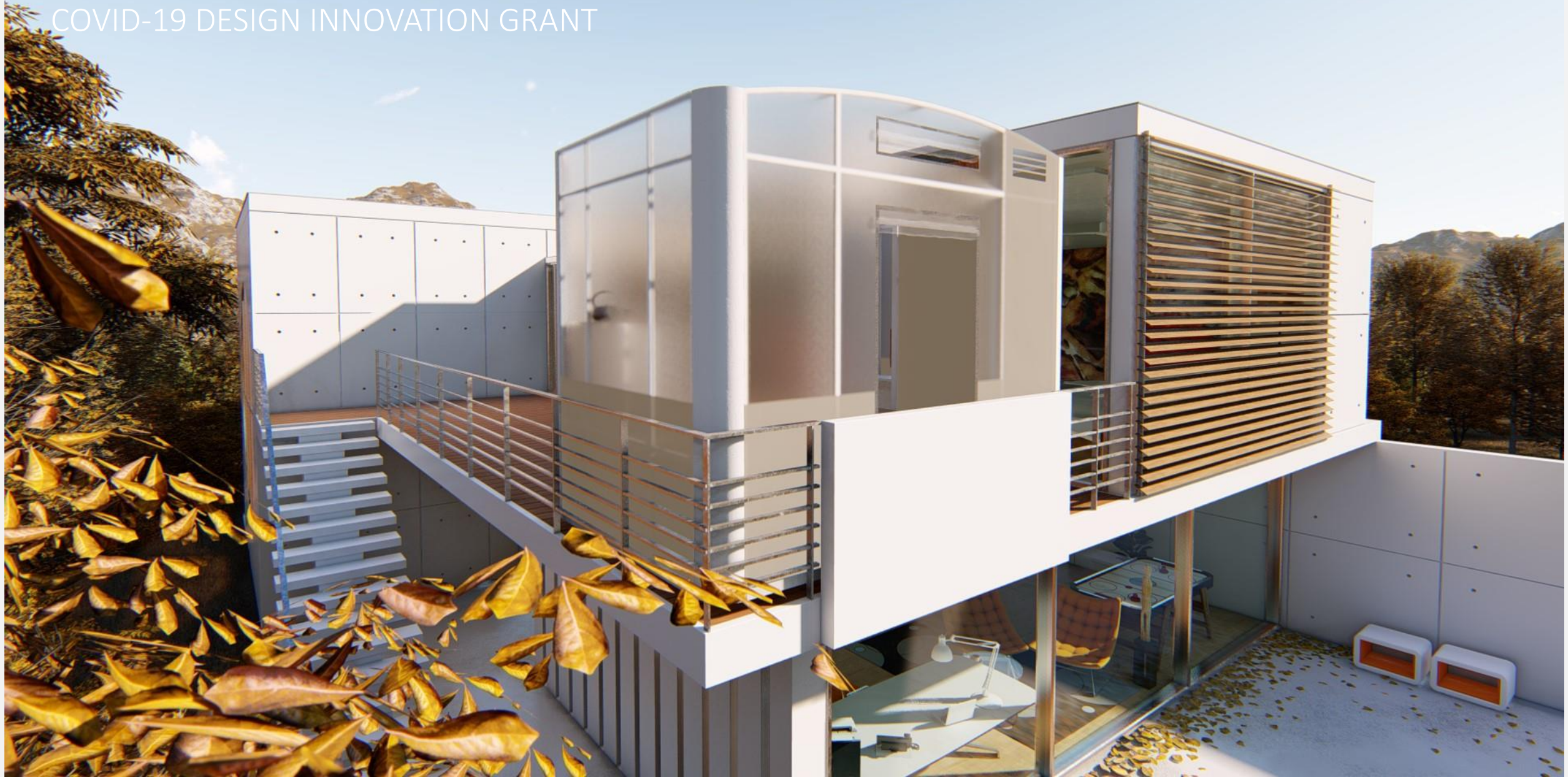


POD DESIGN

COVID-19 DESIGN INNOVATION GRANT



The Challenges



Portable

The POD designed should be portable such that it is easy to transport.



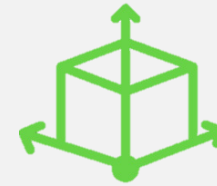
Should not be Cramped

The POD should not make the user feel restricted or confined.



Easy to Install

The POD should be easy to install manually by the users even in the absence of trained technicians.



Size

The size of the POD should be such that it can be installed in small as well as large spaces.



Cost

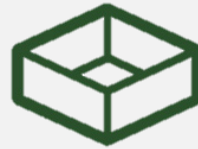
The predicted Production cost should not exceed \$1,000

The Solution



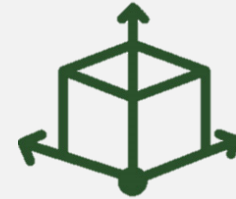
The Framework/Structure

The framework of the POD is made out of Polyvinyl Chloride (PVC) which makes it light weight, Cost-effective, non toxic and easy to install.



The Walls

The walls of the POD are made out of translucent polyester fabric which makes the space look larger and allows the user to experience or communicate with the surroundings despite being isolated.



Size

The size of the POD (2.5m wide, 3m length, 2.5m height) makes it flexible enough to be installed in smaller spaces as well as larger spaces.

Exploded View

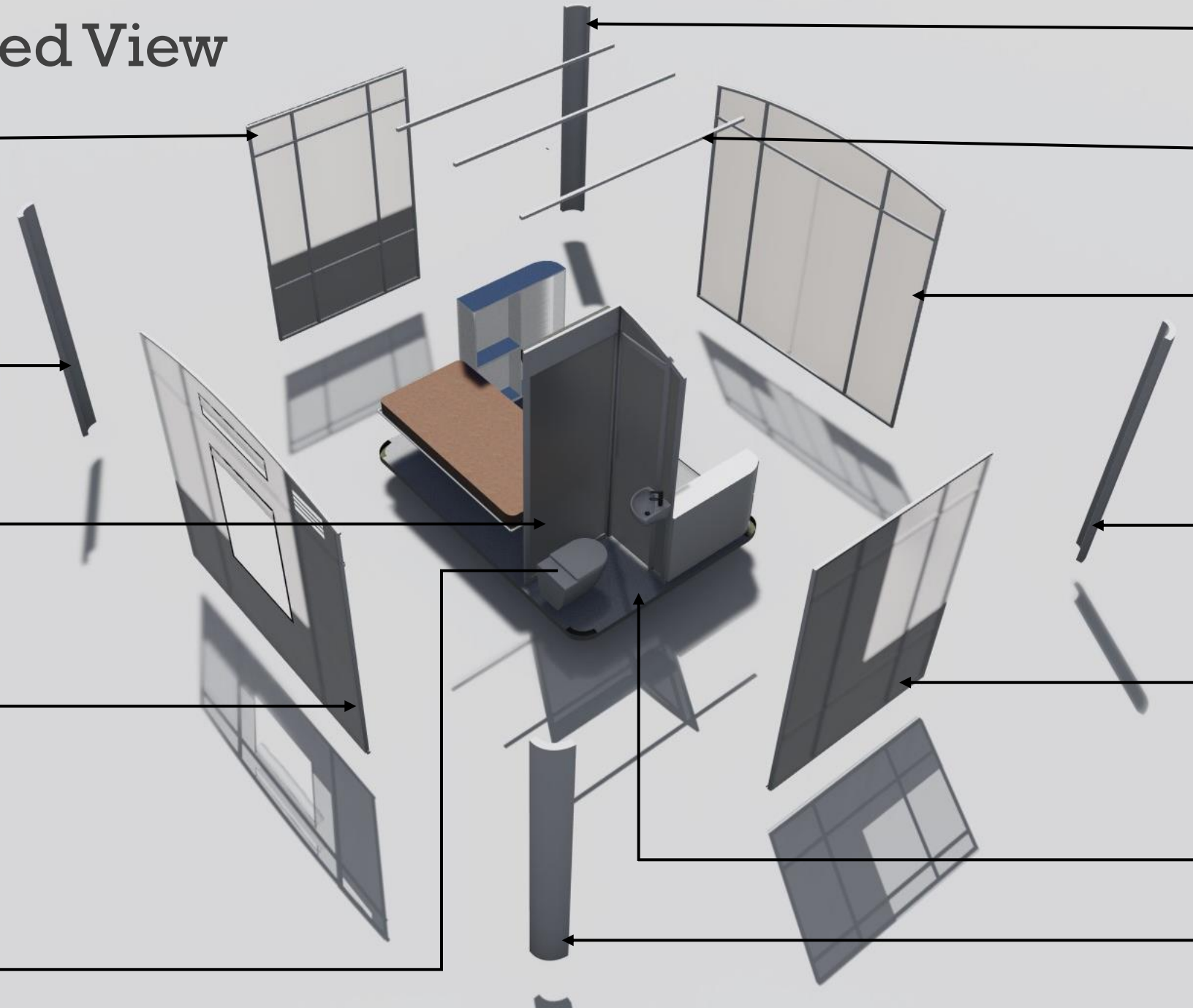
Wall Panel 3
Framework made out of PVC and covered with opaque fabric up to a height of 0.9m and translucent fabric on remaining parts.

Corner Member 3
Made out of PVC and connected to base and panels using corner brackets.

Panel for Toilet
Framework made out of PVC and covered with opaque fabric to cover the toilet.

Wall Panel 4
Framework made out of PVC and covered with opaque fabric up to a height of 0.9m and translucent fabric on remaining parts.

Portable Bio Toilets used



Corner Member 1
Made out of PVC and connected to base and panels using corner brackets.

3 Rods for ceiling framework made out of PVC and covered with translucent polyester fabric.

Wall Panel 1 : Acts as the entry into the POD
Framework made out of PVC pipes and covered with translucent polyester fabric.

Corner Member 2
Made out of PVC and connected to base and panels using corner brackets.

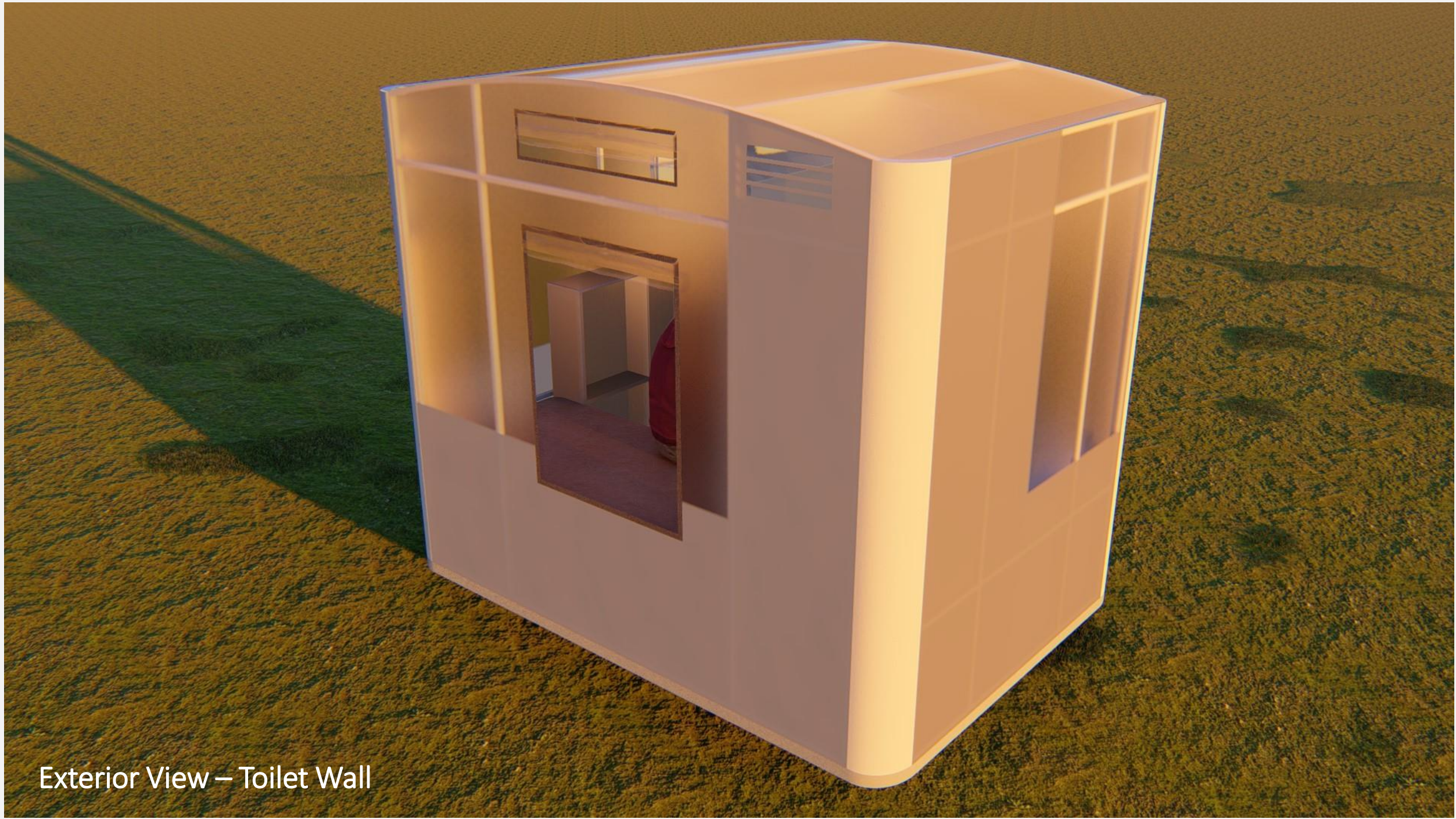
Wall Panel 2
Framework made out of PVC pipes and covered with opaque polyester fabric to cover the toilet space and Translucent polyester fabric on remaining parts.

Base made out of Rubber.

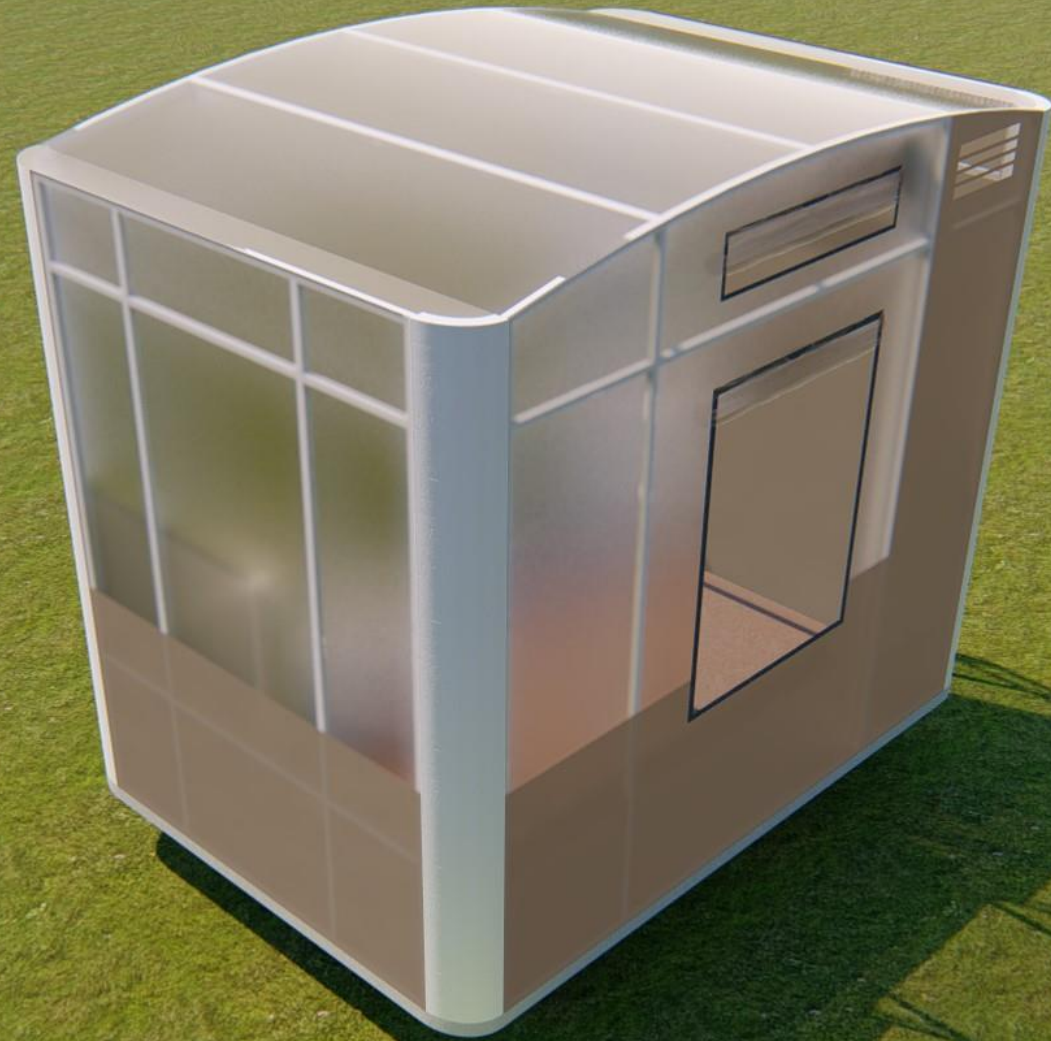
Corner Member 4
Made out of PVC and connected to base and panels using corner brackets.



Interior Top View



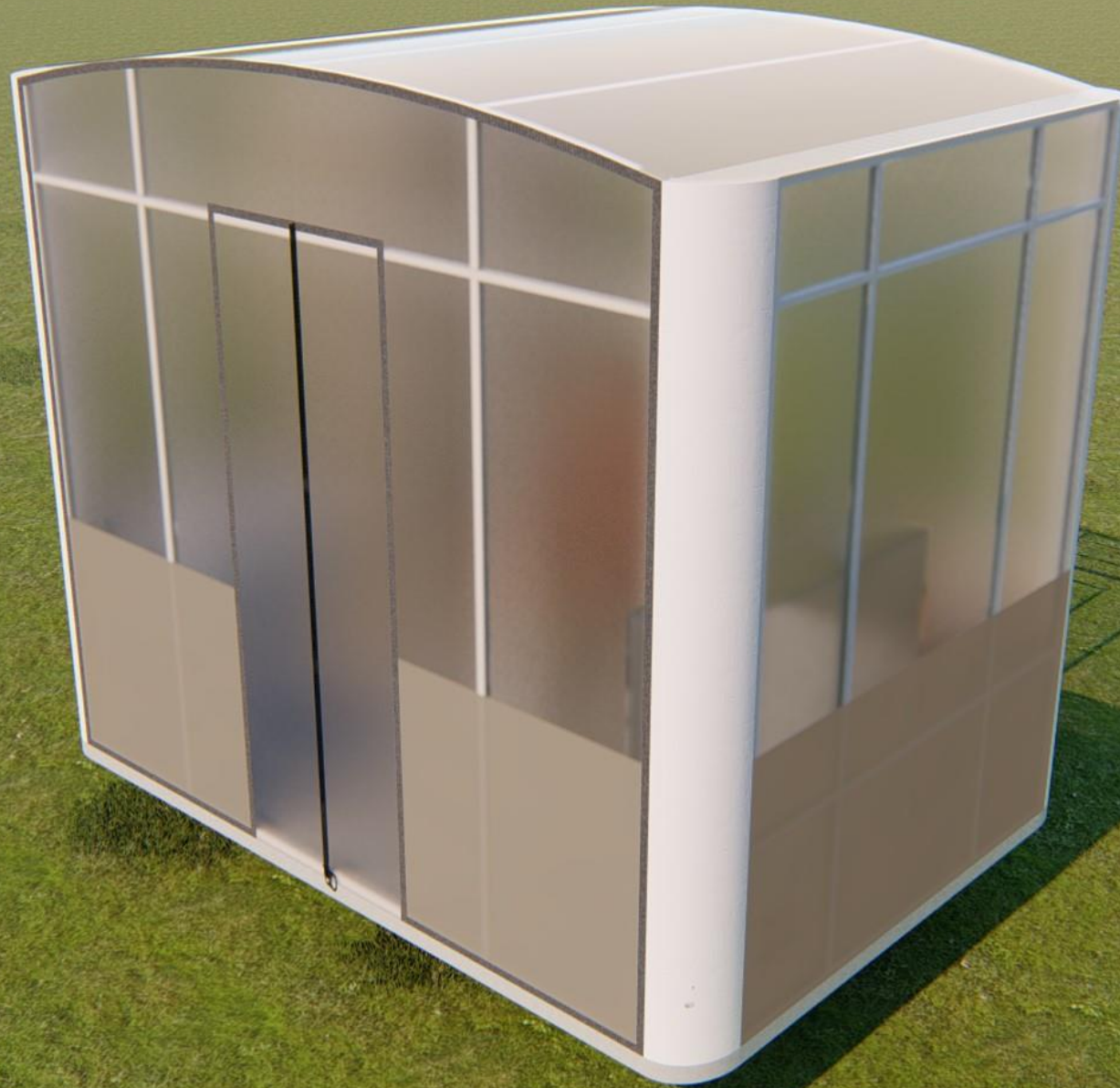
Exterior View – Toilet Wall



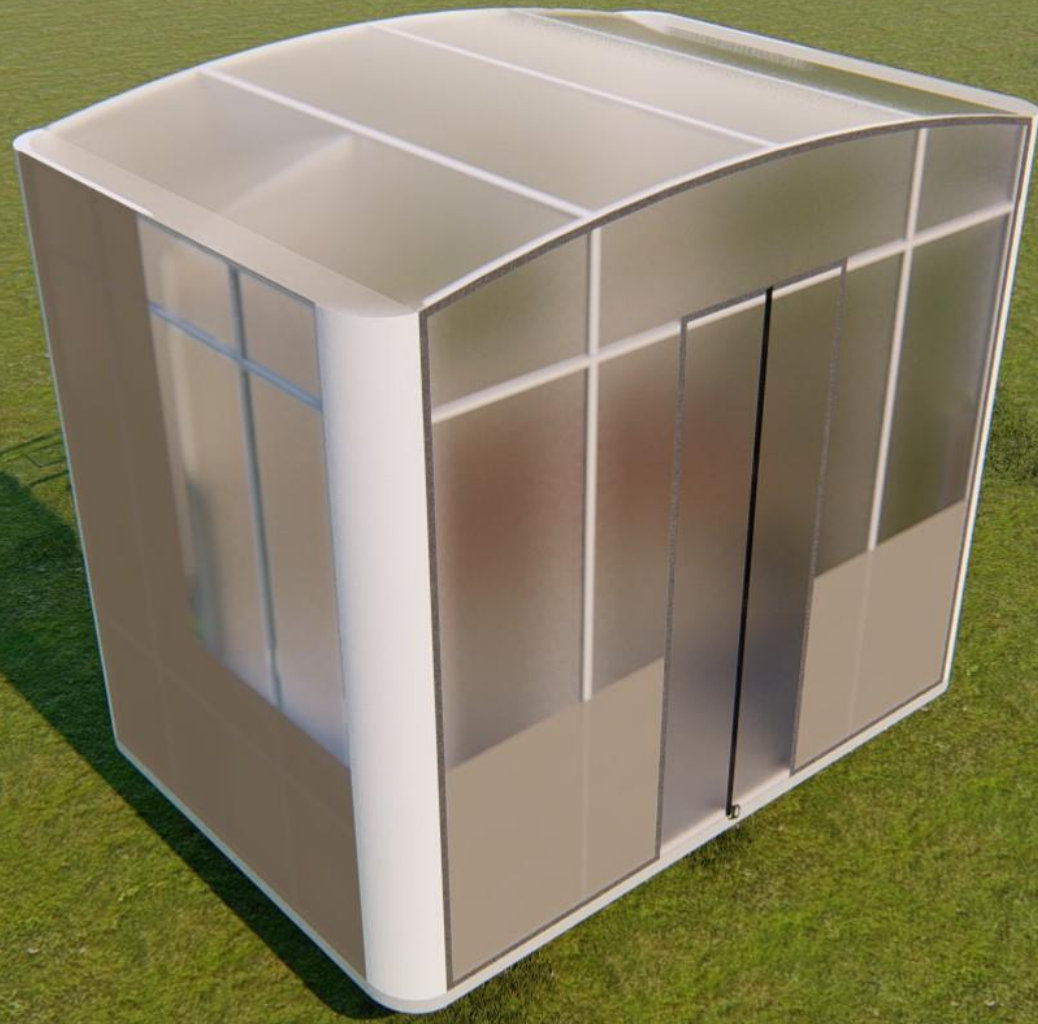
Exterior View



Exterior View – Shorter Wall Face



Exterior View – Entry Wall



Exterior View

Thank You

